

GON

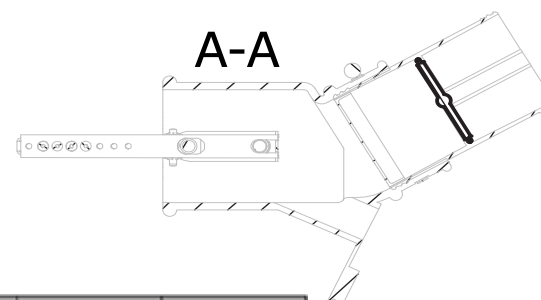
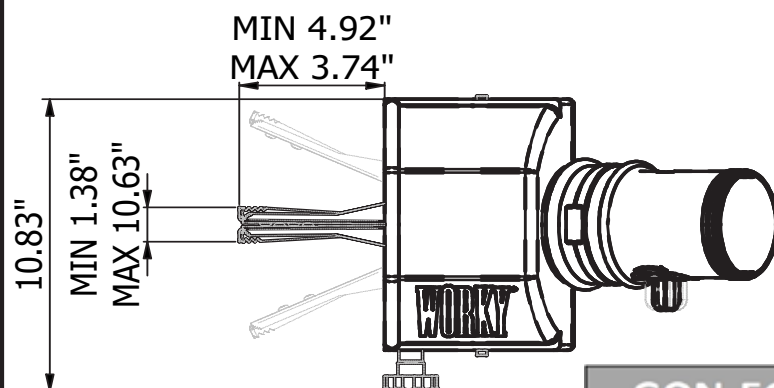
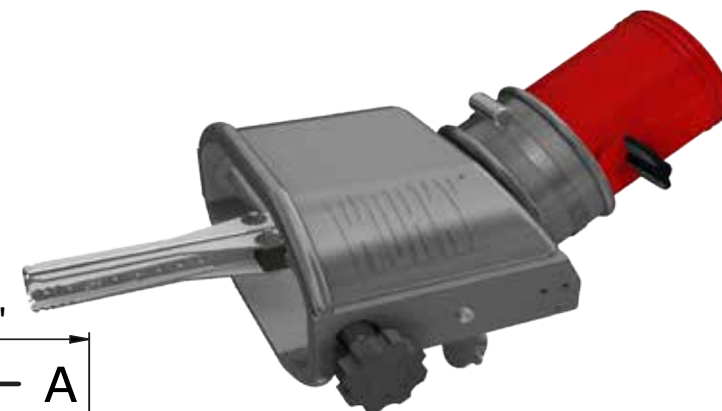
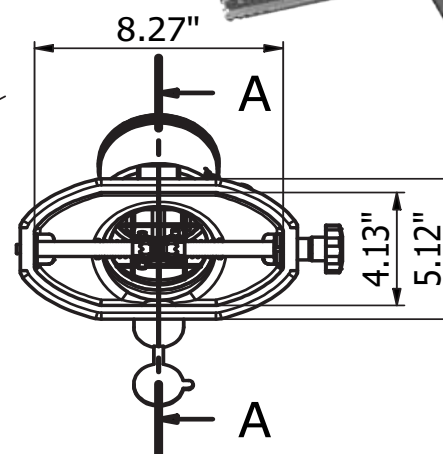
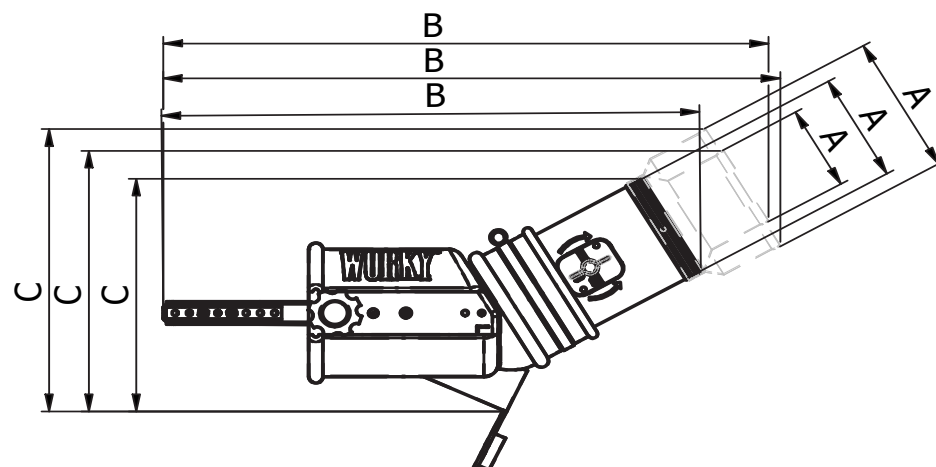
The GON (Gas Oval Nozzle) rubber nozzle has a suction intake of 4.13" x 8.26" and was developed by WORKY to follow the development of the exhaust mufflers of sports cars.

The product has been optimized for coupled exhausts, coupled exhausts on both sides of the vehicle and exhaust mufflers fully integrated into the rear bumper.


All clamp versions are available on both the left side of the cone (standard version) and on the right side. Thanks to this flexibility, it is very easy to fix the GON on cars with double exhaust mufflers



GON-EG - technical datasheet



GON-EG	A Ø	B	C
GON-75EG	3"	20"	9.65"
GON-100EG	4"	17.90"	8.46"
GON-125EG	5"	20.47"	10.43"


 " x " x H
 lb 5.5

THIS DRAWING IS PROPERTY OF RO & Co S.p.A. THE COMPLETE OR PARTIAL REPRODUCTION OF THIS DOCUMENT IS FORBIDDEN. THE OWNER RESERVES THE RIGHT TO UPDATE, MODIFY OR AMEND ANY SPECIFICATION WITHOUT PRIOR NOTICE.

Rev.00

11/06/2021



GON



Oval rubber nozzle with 4.13" x 8.26" suction opening and 30° hose coupling with fully tight manual closing valve, probe for C.O. test.

GON	Ø Hose	Suction Intake
GON-75	3"	4.13" x 8.26"
GON-100	4"	4.13" x 8.26"
GON-125	5"	4.13" x 8.26"

GON-K



Oval rubber nozzle with 4.13" x 8.26" suction opening and 30° hose coupling with fully tight manual closing valve, probe for C.O. test and fixing clip with vulcanized rubber end.

GON-K	Ø Hose	Clip position	Suction Intake
GON-75K	3"	left	4.13" x 8.26"
GON-75KR	3"	right	4.13" x 8.26"
GON-100K	4"	left	4.13" x 8.26"
GON-100KR	4"	right	4.13" x 8.26"
GON-125K	5"	left	4.13" x 8.26"
GON-125KR	5"	right	4.13" x 8.26"

GON-MG



Oval rubber nozzle with 4.13" x 8.26" suction opening and 30° hose coupling with fully tight manual closing valve, probe for C.O. test and fixing gripper with vulcanized rubber ends.

GON-MG	Ø Hose	GRIP position	Suction Intake
GON-75MG	3"	left	4.13" x 8.26"
GON-75MGR	3"	right	4.13" x 8.26"
GON-100MG	4"	left	4.13" x 8.26"
GON-100MGR	4"	right	4.13" x 8.26"
GON-125MG	5"	left	4.13" x 8.26"
GON-125MGR	5"	right	4.13" x 8.26"

GON-EG



Oval rubber nozzle with 4.13" x 8.26" suction opening and 30° hose coupling with fully tight manual closing valve, probe for C.O. test and internal expanding grip with adjustable beaks.

GON-EG	Ø Hose	knob position	Suction Intake
GON-75EG	3"	left	4.13" x 8.26"
GON-75EGR	3"	right	4.13" x 8.26"
GON-100EG	4"	left	4.13" x 8.26"
GON-100EGR	4"	right	4.13" x 8.26"
GON-125EG	5"	left	4.13" x 8.26"
GON-125EGR	5"	right	4.13" x 8.26"

GV-100



Plastic cowling reinforced with fiberglass diam 4" resistant up to 400°F equipped with air tight butterfly valve and safety net.

007.12.016.0



30° bent rubber swivel for nozzles GRN and GON