



[www.worky-italy.com](http://www.worky-italy.com)

FLOOR TRAPS

**WORKY®**



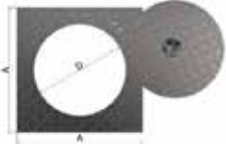
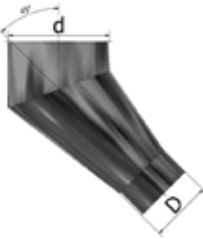
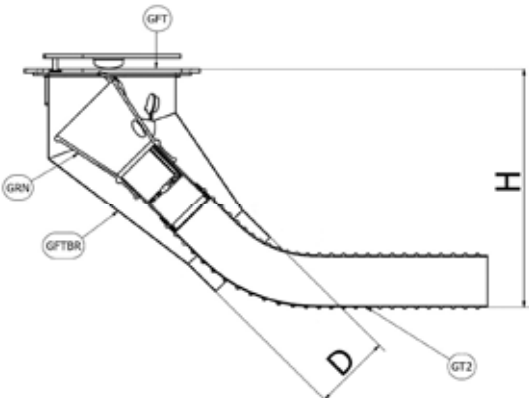


# GFT

The GFT floor traps, both in underground housing and plug-in configuration, have been designed to serve the work areas and disappear once the use is completed. All materials used are suitable for positioning under the floor of the mechanical repair shops. The different sizes are perfectly adapted to extract exhaust gases produced by small or large displacement vehicles as well as trucks, buses or agricultural machines. GFTs are made of high-corrosion-resistant steel and can fit numerous nozzles of the WORKY range.





		GFT			
	GT2-75	GT2-100		GT2-125	GT2-150
	GRNM-16075	GRNM-160100	GRNGM-160100	GRNGM-160125	GRTN-150
	GRNTM-16075	GRNTM-160100	GON-100	GRTN-125	GRTN-150K
	GRNKM-16075	GRNKM-160100	GON-100K GRTN-100 GRTN-100K	GRTN-125K GRTN-125MG	
	GFT-75100		GFT-125150		
	A = 11.81"		A = 11.81"		
	D = Ø 8"		D = Ø 10.24"		
	GFTBR-75	GFTBR-100	GFTBR-100G	GFTBR-125	GFTBR-150
	d = Ø 8"	d = Ø 8"	d = Ø 10.24"	d = Ø 10.24"	d = Ø 10.24"
	D = Ø 5"	D = Ø 6.3"	D = Ø 6.3"	D = Ø 7"	D = Ø 8"
	H = 21.25"	H = 22"	H = 20.87"	H = 21.45"	H = 22"
					



# GFT



Hot galvanized heavy duty steel floor trap flange for underground exhaust extraction systems. To be used in combination with the GFTBR underground cones.

GFT	DIMENSIONS	Ø HOSE
GFT-75100	12"x 12"	3" / 4"
GFT-125150	12"x 12"	5" / 6"
GFT-400	15,75" X 15,75"	MULTIDIAMETER

# GFTBR



Inground metal sheet steel cone with 45° bend for underground hose storage to be used in combination with the GFT flange. this product is suitable to welcome the GRN, GRNK, GRNG, GRTN, GRTN-K nozzles

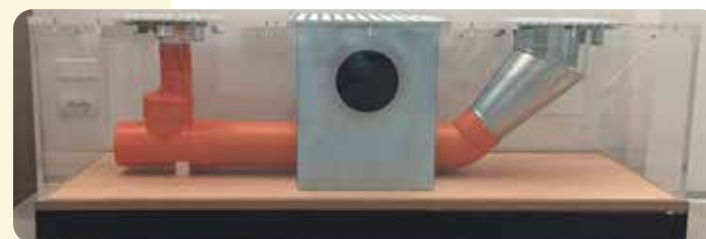
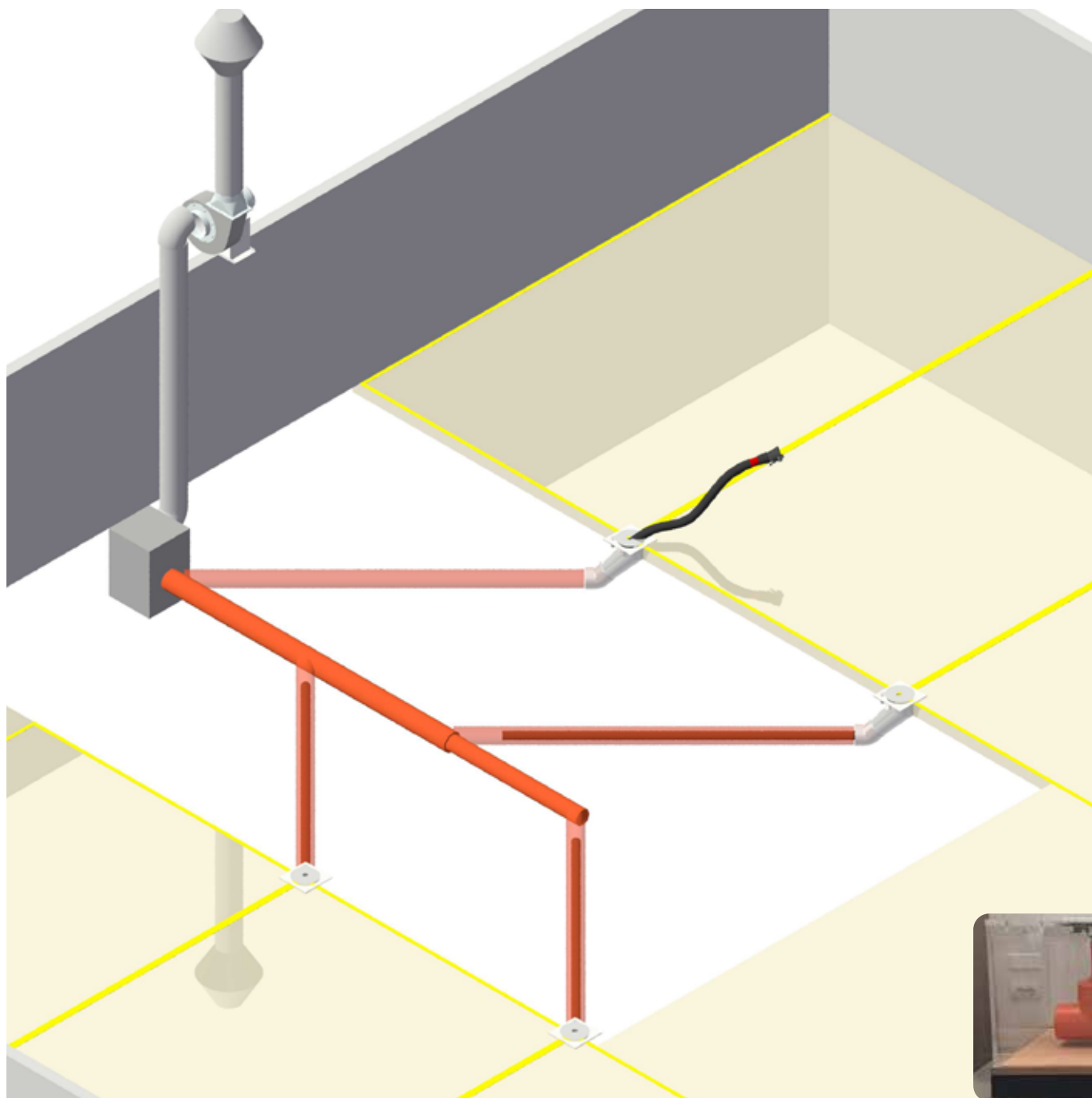
GFTBR	Ø HOSE
GFTBR-75	3"
GFTBR-100G	4"
GFTBR-125	5"
GFTBR-150	6"

# GFTBR-X

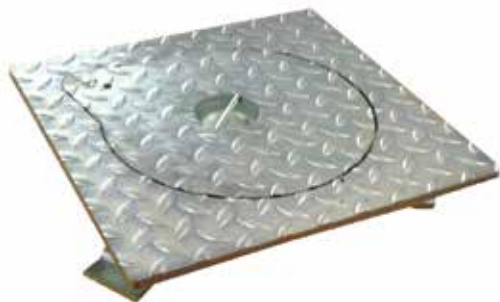


Innovative polymeric inground cone with multidiameter underground pipe connection in accordance to the hose diameter used in the extraction system. The special construction is allowing the underground use of big nozzles with handle or internal grip (GON-100EG, GRTN-150MG), preventing them from falling inside by means of the pre-formed step designed. To be used in combination with GFT-400

GFTBR-X	Ø HOSE
GFTBR-X75	3"
GFTBR-X100	4"
GFTBR-X125	5"
GFTBR-X150	6"



# GFT



Hot galvanized heavy duty steel floor trap flange for underground exhaust extraction systems. To be used in combination with all the diameters of the GFTB external bends for hose.

GFT	DIMENSIONS
GFT-75100	12"x 12"

# GFTB



Hose holding bend for floor traps to be connected to the GFTC underground cone and in combination with the GFT-75100

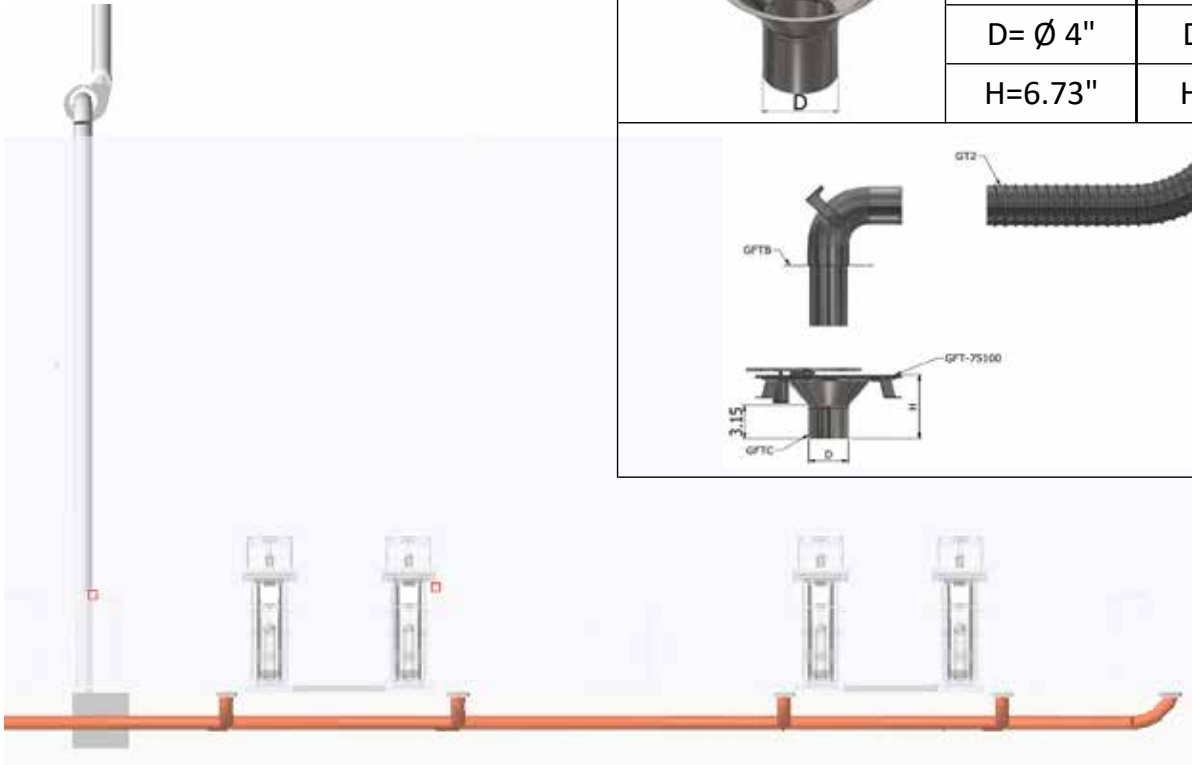
GFTB	Ø HOSE
GFTB-75/9005	3"
GFTB-100/9005	4"
GFTB-125/9005	5"
GFTB-150/9005	6"

# GFTC



Underground reduction cone for plug-in bend positioning.

GFTC	Ø HOSE
GFTC-75100	3" / 4"
GFTC-125150	5" / 6"



		<b>GFTB</b>				
	GFTB-75/9005	GFTB-100/9005	GFTB-125/9005	GFTB150/9005		
	3"	4"	5"	6"		
	<b>GFT-75100</b>					
	A= 11.81"					
	d= Ø 8"					
	<b>GFTC-75100</b>		<b>GFTC-125150</b>			
	d= Ø 8"		d= Ø 8"			
	D= Ø 4"		D= Ø 6"			
	H=6.73"		H=6.73"			
						

