

[www.worky-italy.com](http://www.worky-italy.com)

HOSE REELS

**WORKY®**



# GMR

## Gas Mechanical Reel

The GMR mechanical reels are one of the most well-known solutions for extracting gases directly from its source (vehicle tailpipe). They are available in different versions, from 3" to 8" diam hose, with a maximum length of 50'. The product can be completed with countless accessories, such as nozzles for any kind of exhaust pipe, on/off switches, closing valves to maximise its performance, as well as bracketing systems for several kinds of industrial ceiling. Convenient, basic and complete, the GMR is the best-selling hose reel line.

## Product Plus

- it's equipped with armoured rubber flexible hose totally crushproof and resistant up to 400°F;
- the spring power can be easily adjusted in case of needs;
- hundreds of exhaust nozzles can be connected in order to find the best adaptation;
- sturdy metal construction with plastic discs and dedicated drum for optimizing the dimensions;





# GMR+



Spring recoil hose reel for exhaust extraction complete with GT2 flexible hose totally crushproof and resistant up to 400°F. The safety stopper and the clamps for the nozzle are always included.

GMR+	Ø	L.
GMR+757.5	3"	25'
GMR+7510	3"	33'
GMR+7512.5	3"	41'
GMR+7515	3"	50'
GMR+1007.5	4"	25'
GMR+10010	4"	33'
GMR+10012.5	4"	41'
GMR+10015	4"	50'

GMR+	Ø	L.
GMR+1257.5	5"	25'
GMR+12510	5"	33'
GMR+12512.5	5"	41'
GMR+12515	5"	50'
GMR+1507.5	6"	25'
GMR+15010	6"	33'
GMR+15012.5	6"	41'
GMR+15015	6"	50'
GMR-2006	8"	20'

# GM



Microswitch for the automatic start / stop of the centralized fan to be connected to the main switchboard (not included)

GM
GM

# GFT



GFT	Ø
GFT-75	3"
GFT-100	4"
GFT-125	5"
GFT-150	6"
GFT-200	8"

Safety stopper for flexible hoses on mechanical hose reels. Normally provided together with GMR and GMRFHP hose reels.

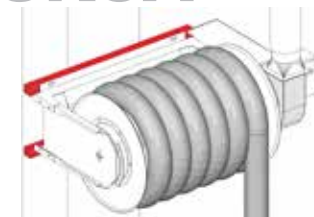
# CV+R



Automatic closing valve activated by the rotation of the disk, available in two different diameters in accordance to the hose diameter.

CV+R	Ø	APPLICATION
CV+125R	5"	suitable for reels with 3" and 4" hose
CV+160R	6.3"	suitable for reels with 5" and 6" hose

# GKSA



# GKSAC



Universal reinforced fixing kit for hose reels to be placed on weak walls or on columns.

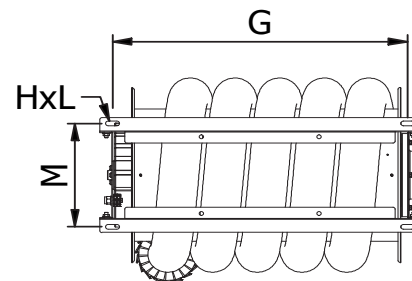
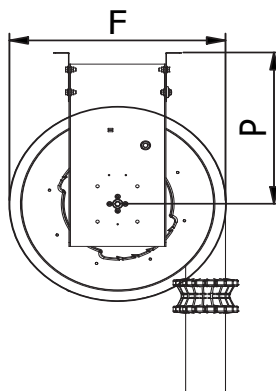
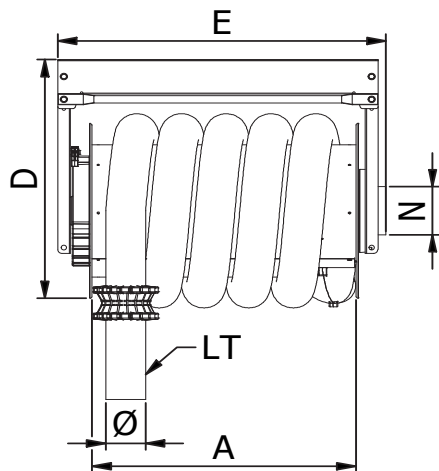
GKSA	APPLICATION
GKSA	for thin walls or pillars
GKSAC	for thin walls or pillars not to be drilled



A brand of RO & Co S.p.A.  
(U.S. BRANCH)  
601 Brickell Key Drive  
Miami, Florida 33131, USA  
Tel. +1 305 (705) 5017  
sales@worky-america.com

www.worky-italy.com

## GMR+ technical datasheet



COD.	GMR+											
	Ø [in]	LT [ft]	A [in]	D [in]	E [in]	F [in]	G [in]	HxL [in]	M [in]	N [in]	P [in]	Lb
GMR+757.5	3	25	24.80	25.00	30.71	20.79	27.64	0.78x0.51	10.79	5	14.80	64
GMR+7510		33	31.50	25.00	37.40	20.79	2x17.17		10.79	5	14.80	79
GMR+7512.5		41	26.77	31.65	33.74	25.59	2x13.37		12.76	6.3	19.06	104
GMR+7515		49	33.46	33.19	40.43	25.59	2x17.17		12.76	6.3	19.06	115
GMR+1007.5	4	25	24.80	26.97	30.71	22.76	27.64	0.78x0.52	10.79	5	15.79	66
GMR+10010		33	31.50	26.97	37.40	22.76	2x17.17		10.79	5	15.79	86
GMR+10012.5		41	33.46	32.20	40.43	26.69	2x16.71		12.76	6.3	19.06	110
GMR+10015		49	42.52	33.19	49.49	26.69	2x14.17		12.76	6.3	19.06	126
GMR+1257.5	5	25	26.77	33.19	33.74	28.74	2x13.37	0.78x0.53	12.76	6.3	19.06	97
GMR+12510		33	33.46	33.19	40.43	28.74	2x16.71		12.76	6.3	19.06	106
GMR+12512.5		41	42.52	33.19	49.49	28.74	3x14.2		12.76	6.3	19.06	130
GMR+12515		49	42.52	33.19	49.49	28.74	3x14.2		12.76	6.3	19.06	137
GMR+1507.5	6	25	26.77	35.16	33.74	30.71	2x13.4	0.78x0.54	12.76	6.3	19.06	108
GMR+15010		33	33.46	35.16	40.43	30.71	2x16.71		12.76	6.3	20.04	115
GMR+15012.5		41	42.52	35.16	49.49	30.71	3x14.2		12.76	6.3	20.04	134
GMR+15015		49	50.08	35.16	57.05	30.71	3x17.5		12.76	6.3	20.04	168

THIS DRAWING IS PROPERTY OF RO & Co S.p.A. THE COMPLETE OR PARTIAL REPRODUCTION OF THIS DOCUMENT IS FORBIDDEN. THE OWNER RESERVES THE RIGHT TO UPDATE, MODIFY OR AMEND ANY SPECIFICATION WITHOUT PRIOR NOTICE.

Rev.00 04/05/2021

# GMRFHP/US

## Gas Mechanical Reel with High Pressure Fan

The GMRFHP/US mechanical hose reels hold the same technology as GMR hose reel with an integrated high pressure fan. The GMRFHP/US is a perfect solution for single or double work bays. It can be completed with different nozzles, chimney and on/off switch. It is possible to add the automatic start (GMC/US) that will activate the fan by pulling the hose and turn it off by stowing it back.

### Product Plus

- it's equipped with armoured rubber flexible hose totally crushproof and resistant up to 400°F;
- the spring power can be easily adjusted in case of needs;
- hundreds of exhaust nozzles can be connected in order to find the best adaptation;
- sturdy metal construction and dedicated drum for optimizing the dimensions;
- Fan included to minimize the costs;





# GMRFHP/US



Spring recoil hose reel complete with direct driven high pressure fan, crushproof flexible hose resistant up to 400°F and hose stopper.

GMRFHP/US	Ø"	L. '	GMRFHP/US	Ø"	L. '
GMRFHP/US+757.5	3"	25'	GMRFHP/US+1257.5	5"	25'
GMRFHP/US+7510	3"	33'	GMRFHP/US+12510	5"	33'
GMRFHP/US+7512.5	3"	41'	GMRFHP/US+12512.5	5"	41'
GMRFHP/US+7515	3"	50'	GMRFHP/US+12515	5"	50'
GMRFHP/US+1007.5	4"	25'	GMRFHP/US+1507.5	6"	25'
GMRFHP/US+10010	4"	33'	GMRFHP/US+15010	6"	33'
GMRFHP/US+10012.5	4"	41'	GMRFHP/US+15012.5	6"	41'
GMRFHP/US+10015	4"	50'	GMRFHP/US+15015	6"	50'

# GMC/US



Microswitch with small switchboard included for the automatic start / stop of the integrated fan. Suitable only for the reels with integrated fan.

GMC/US	HP	Phases	Therm. Prot.
GMC/US	-	3	x
GMCM/US	-	1	x
GMCP/US-0.5	0.5 HP	3	✓
GMCP/US-1	1 HP	3	✓
GMCP/US-1.5	1.5 HP	3	✓

# GFT

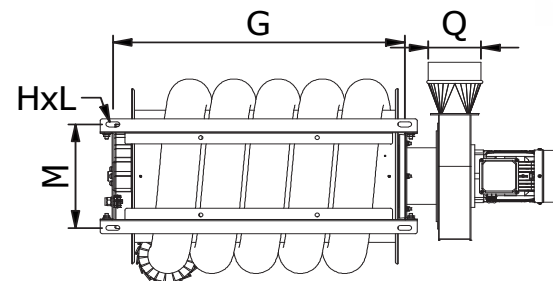
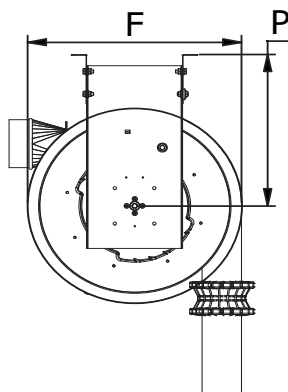
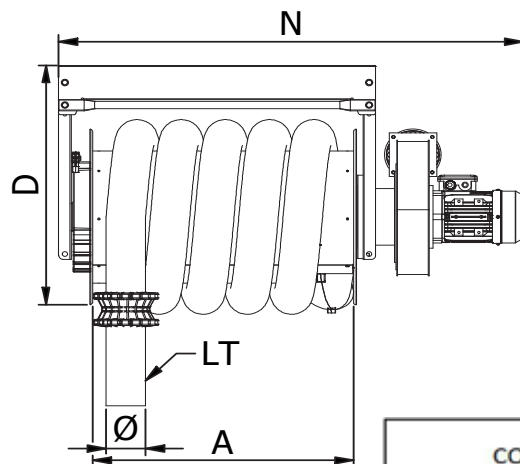


Safety stopper for flexible hoses on mechanical hose reels. Normally provided together with the hose reels.

GFT	Ø
GFT-75	3"
GFT-100	4"
GFT-125	5"
GFT-150	6"
GFT-200	8"



## GMRFHP/US+ technical datasheet



COD.	GERFHP/US+ / GERFTHP/US+													
	Ø [in]	LT [ft]	HP/kw	A [in]	D [in]	F [in]	G [in]	HxL [in]	M [in]	N [in]	Q [in]	P [in]	R [mm]	Lb
GERFHP/US+757.5	3	25	0.5/0.37	24.80	25.00	20.79	27.64	0.78x0.51	10.79	32.99	5	14.80	4.72	106
GERFHP/US+7510		33	0.5/0.37	31.50	25.00	20.79	2x17.17		10.79	52.56	5	14.80	4.72	115
GERFHP/US+7512.5		41	0.5/0.37	26.77	31.65	25.59	2x13.37		12.76	47.87	5	19.06	4.72	159
GERFHP/US+7515		49	0.5/0.37	33.46	33.19	25.59	2x17.17		12.76	54.57	5	19.06	4.72	170
GERFHP/US+1007.5	4	25	0.5/0.37	24.80	26.97	22.76	27.64	0.78x0.52	10.79	46.42	5	15.79	4.72	108
GERFHP/US+10010		33	0.5/0.37	31.50	26.97	22.76	2x17.17		10.79	52.56	5	15.79	4.72	119
GERFHP/US+10012.5		41	0.5/0.37	33.46	32.20	26.69	2x16.71		12.76	54.57	5	19.06	4.72	161
GERFHP/US+10015		49	0.5/0.37	42.52	33.19	26.69	2x14.17		12.76	64.61	5	19.06	4.72	187
GERFHP/US+1257.5	5	25	1.5/1.1	26.77	33.19	28.74	2x13.37	0.78x0.53	12.76	48.86	6.3	19.06	5	170
GERFHP/US+12510		33	1.5/1.1	33.46	33.19	28.74	2x16.71		12.76	55.55	6.3	19.06	5	185
GERFHP/US+12512.5		41	1.5/1.1	42.52	33.19	28.74	3x14.2		12.76	64.61	6.3	19.06	5	214
GERFHP/US+12515		49	1.5/1.1	42.52	33.19	28.74	3x14.2		12.76	64.61	6.3	19.06	5	220
GERFHP/US+1507.5	6	25	1.5/1.1	26.77	35.16	30.71	2x13.4	0.78x0.54	12.76	48.86	6.3	19.06	5	190
GERFHP/US+15010		33	1.5/1.1	33.46	35.16	30.71	2x16.71		12.76	55.55	6.3	20.04	5	203
GERFHP/US+15012.5		41	1.5/1.1	42.52	35.16	30.71	3x14.2		12.76	64.61	6.3	20.04	5	218
GERFHP/US+15015		49	1.5/1.1	50.08	35.16	30.71	3x17.5		12.76	72.17	6.3	20.04	5	218

# GER/GERT

## Gas Electrical Reel

The GER/US (with push button) and GERT/US (with remote control) motor driven reels are designed to be rolled up and unrolled just by pushing a button. Thanks to its great power, the inner motor is suitable for any hose length or diameter.

Both GER/US and GERT/US versions are equipped with a microswitch for the automatic start of the fan, by means of a dedicated control board (not included). Compact, strong, and versatile, these motorised hose reels include huge versions with 8" hose, up to 50' long!

## Product Plus

- it's equipped with armoured rubber flexible hose totally crushproof and resistant up to 400°F;
- heavy duty single phase internal motor for winding the hose up and down;
- hundreds of exhaust nozzles can be connected in order to find the best adaptation;
- sturdy metal construction and dedicated drum for optimizing the dimensions;
- automatic start / stop microswitch integrated;







# GER/US



Electric recoil hose reel with wired buttons for exhaust extraction complete with crushproof flexible hose resistant up to 400°F and automatic electric stopper. Internal winding motor single phase 110V.

GER/US	Ø	L.
GER/US+757.5	3"	25'
GER/US+7510	3"	33'
GER/US+7512.5	3"	41'
GER/US+7515	3"	50'
GER/US+1007.5	4"	25'
GER/US+10010	4"	33'
GER/US+10012.5	4"	41'
GER/US+10015	4"	50'
GER/US+1257.5	5"	25'

GER/US	Ø	L.
GER/US+12510	5"	33'
GER/US+12512.5	5"	41'
GER/US+12515	5"	50'
GER/US+1507.5	6"	25'
GER/US+15010	6"	33'
GER/US+15012.5	6"	41'
GER/US+15015	6"	50'
GER/US-20010	8"	33'
GER/US-20015	8"	50'

# GERT/US



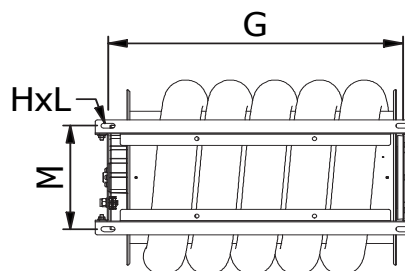
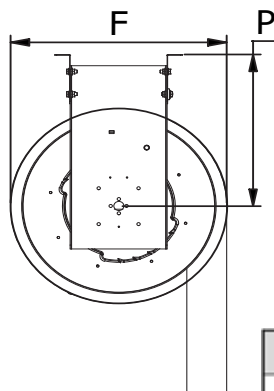
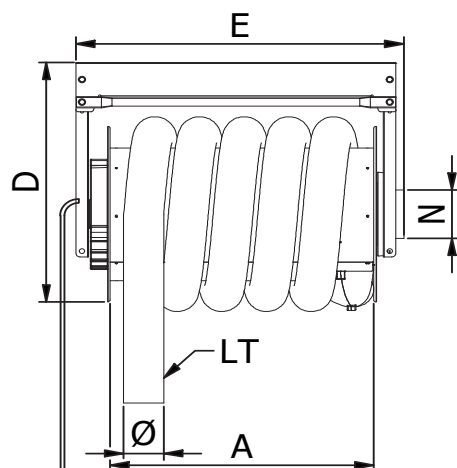
Electric recoil hose reel with remote control for exhaust extraction complete with crushproof flexible hose resistant up to 400°F and automatic electric stopper. Internal winding motor single phase 110V.

GERT/US	Ø	L.
GERT/US+757.5	3"	25'
GERT/US+7510	3"	33'
GERT/US+7512.5	3"	41'
GERT/US+7515	3"	50'
GERT/US+1007.5	4"	25'
GERT/US+10010	4"	33'
GERT/US+10012.5	4"	41'
GERT/US+10015	4"	50'
GERT/US+1257.5	5"	25'

GERT/US	Ø	L.
GERT/US+12510	5"	33'
GERT/US+12512.5	5"	41'
GERT/US+12515	5"	50'
GERT/US+1507.5	6"	25'
GERT/US+15010	6"	33'
GERT/US+15012.5	6"	41'
GERT/US+15015	6"	50'
GERT/US-20010	8"	33'
GERT/US-20015	8"	50'



## GER/US+ / GERT/US+ technical datasheet



15 ft



GER/US+



GERT/US+

WINDING MOTOR	W	V	Ph	Hz	A	Torque [Nm]	max lift [lb]
3" TO 6" HOSE	610	115	1	50-60	5.2	170	375

COD.	GER/US+ / GERT/US+											
	Ø [in]	LT [ft]	A [in]	D [in]	E [in]	F [in]	G [in]	HxL [in]	M [in]	N [in]	P [in]	Lb
GER/US+757.5	3	25	24.80	25.00	30.71	20.79	27.64	0.78x0.51	10.79	5	14.80	79
GER/US+7510		33	31.50	25.00	37.40	20.79	2x17.17		10.79	5	14.80	95
GER/US+7512.5		41	26.77	31.65	33.74	25.59	2x13.37		12.76	6.3	19.06	119
GER/US+7515		49	33.46	33.19	40.43	25.59	2x17.17		12.76	6.3	19.06	130
GER/US+1007.5	4	25	24.80	26.97	30.71	22.76	27.64	0.78x0.52	10.79	5	15.79	82
GER/US+10010		33	31.50	26.97	37.40	22.76	2x17.17		10.79	5	15.79	101
GER/US+10012.5		41	33.46	32.20	40.43	26.69	2x16.71		12.76	6.3	19.06	126
GER/US+10015		49	42.52	33.19	49.49	26.69	2x14.17		12.76	6.3	19.06	141
GER/US+1257.5	5	25	26.77	33.19	33.74	28.74	2x13.37	0.78x0.53	12.76	6.3	19.06	112
GER/US+12510		33	33.46	33.19	40.43	28.74	2x16.71		12.76	6.3	19.06	121
GER/US+12512.5		41	42.52	33.19	49.49	28.74	3x14.2		12.76	6.3	19.06	146
GER/US+12515		49	42.52	33.19	49.49	28.74	3x14.2		12.76	6.3	19.06	152
GER/US+1507.5	6	25	26.77	35.16	33.74	30.71	2x13.4	0.78x0.54	12.76	6.3	19.06	123
GER/US+15010		33	33.46	35.16	40.43	30.71	2x16.71		12.76	6.3	20.04	130
GER/US+15012.5		41	42.52	35.16	49.49	30.71	3x14.2		12.76	6.3	20.04	150
GER/US+15015		49	50.08	35.16	57.05	30.71	3x17.5		12.76	6.3	20.04	154

# GERFHP/US

## Gas Electrical Reel with Fan

The GERF (with push button) and the GERFT (with remote control) motor driven hose reels with integrated fan are designed to be rolled up and unrolled just by pushing a button. The internal motor, thanks to its great power, is suitable for any hose length or diameter.

Both GER/US and GERT/US versions are equipped with a microswitch that can start the integrated fan just by adding a device called GEMC/US (optional). The GSA-R fan can be rotated in 8 different positions and it has been sized to ensure the best performance.

## Product Plus

- it's equipped with armoured rubber flexible hose totally crushproof and resistant up to 400°F;
- heavy duty single phase internal motor for winding the hose up and down;
- hundreds of exhaust nozzles can be connected in order to find the best adaptation;
- sturdy metal construction and dedicated drum for optimizing the dimensions;
- Fan included to minimize the costs;





# GERFHP/US



Electric recoil hose reel with wired push button for exhaust extraction, complete with fan, flexible hose and automatic stopper. Internal winding motor single phase 110V - Extraction fan 460V threephase 60HZ UL

GERFHP/US	Ø "	L. '	GERFHP/US	Ø "	L. '
GERFHP/US+757.5	3"	25'	GERFHP/US+12510	5"	33'
GERFHP/US+7510	3"	33'	GERFHP/US+12512.5	5"	41'
GERFHP/US+7512.5	3"	41'	GERFHP/US+12515	5"	50'
GERFHP/US+7515	3"	50'	GERFHP/US+1507.5	6"	25'
GERFHP/US+1007.5	4"	25'	GERFHP/US+15010	6"	33'
GERFHP/US+10010	4"	33'	GERFHP/US+15012.5	6"	41'
GERFHP/US+10012.5	4"	41'	GERFHP/US+15015	6"	50'
GERFHP/US+10015	4"	50'	GERFHP/US-20010	8"	33'
GERFHP/US+1257.5	5"	25'	GERFHP/US-20015	8"	50'

# GERFTHP/US



Electric recoil hose reel with remote control for exhaust extraction, complete with fan, flexible hose and automatic stopper. Internal winding motor single phase 110V - Extraction fan 460V threephase 60HZ UL

GERFTHP/US	Ø "	L. '	GERFTHP/US	Ø "	L. '
GERFTHP/US+757.5	3"	25'	GERFTHP/US+12510	5"	33'
GERFTHP/US+7510	3"	33'	GERFTHP/US+12512.5	5"	41'
GERFTHP/US+7512.5	3"	41'	GERFTHP/US+12515	5"	50'
GERFTHP/US+7515	3"	50'	GERFTHP/US+1507.5	6"	25'
GERFTHP/US+1007.5	4"	25'	GERFTHP/US+15010	6"	33'
GERFTHP/US+10010	4"	33'	GERFTHP/US+15012.5	6"	41'
GERFTHP/US-10012.5	4"	41'	GERFTHP/US-15015	6"	50'
GERFTHP/US-10015	4"	50'	GERFTHP/US-20010	8"	33'
GERFTHP/US-1257.5	5"	25'	GERFTHP/US-20015	8"	50'

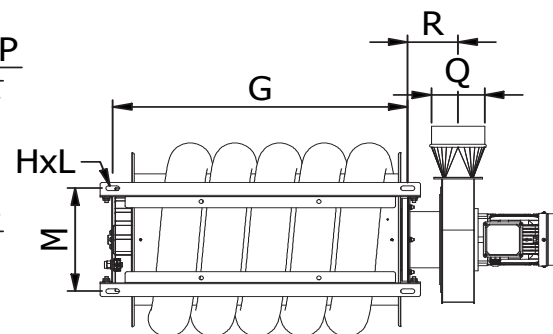
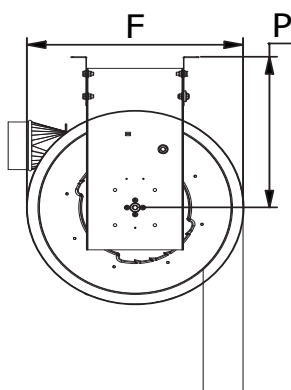
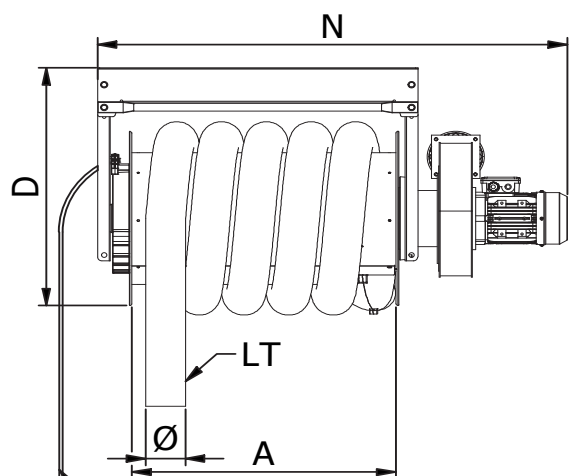
# GEMC/US



Microswitch for the automatic start / stop of the fan integrated in the hose reel.

GEMC/US	HP	Phases	Term. Prot.
GEMC/US	-	3	x
GEMCM/US	-	1	x
GEMCP/US-0.5	0,5 HP	3	✓
GEMCP/US-1	1 HP	3	✓
GEMCP/US-1.5	1,5 HP	3	✓

## GERFHP/US+ / GERFTHP/US+ technical datasheet



15 ft



GERF/US+

GERFT/US+

WINDING MOTOR	W	V	Ph	Hz	A	Torque [Nm]	max lift [lb]
3" TO 6" HOSE	610	115	1	50-60	5.2	170	375

COD.	GERFHP/US+ / GERFTHP/US+														
	Ø [in]	LT [ft]	HP/Kw	A [in]	D [in]	F [in]	G [in]	HxL [in]	M [in]	N [in]	Q [in]	P [in]	R [mm]	Lb	
GERFHP/US+757.5	3	25	0.5/0.37	24.80	25.00	20.79	27.64	0.78x0.51	10.79	32.99	5	14.80	4.72	106	
GERFHP/US+7510		33	0.5/0.37	31.50	25.00	20.79	2x17.17		10.79	52.56	5	14.80	4.72	115	
GERFHP/US+7512.5		41	0.5/0.37	26.77	31.65	25.59	2x13.37		12.76	47.87	5	19.06	4.72	159	
GERFHP/US+7515		49	0.5/0.37	33.46	33.19	25.59	2x17.17		12.76	54.57	5	19.06	4.72	170	
GERFHP/US+1007.5	4	25	0.5/0.37	24.80	26.97	22.76	27.64	0.78x0.52	10.79	46.42	5	15.79	4.72	108	
GERFHP/US+10010		33	0.5/0.37	31.50	26.97	22.76	2x17.17		10.79	52.56	5	15.79	4.72	119	
GERFHP/US+10012.5		41	0.5/0.37	33.46	32.20	26.69	2x16.71		12.76	54.57	5	19.06	4.72	161	
GERFHP/US+10015		49	0.5/0.37	42.52	33.19	26.69	2x14.17		12.76	64.61	5	19.06	4.72	187	
GERFHP/US+1257.5	5	25	1.5/1.1	26.77	33.19	28.74	2x13.37	0.78x0.53	12.76	48.86	6.3	19.06	5	170	
GERFHP/US+12510		33	1.5/1.1	33.46	33.19	28.74	2x16.71		12.76	55.55	6.3	19.06	5	185	
GERFHP/US+12512.5		41	1.5/1.1	42.52	33.19	28.74	3x14.2		12.76	64.61	6.3	19.06	5	214	
GERFHP/US+12515		49	1.5/1.1	42.52	33.19	28.74	3x14.2		12.76	64.61	6.3	19.06	5	220	
GERFHP/US+1507.5	6	25	1.5/1.1	26.77	35.16	30.71	2x13.4	0.78x0.54	12.76	48.86	6.3	19.06	5	190	
GERFHP/US+15010		33	1.5/1.1	33.46	35.16	30.71	2x16.71		12.76	55.55	6.3	20.04	5	203	
GERFHP/US+15012.5		41	1.5/1.1	42.52	35.16	30.71	3x14.2		12.76	64.61	6.3	20.04	5	218	
GERFHP/US+15015		49	1.5/1.1	50.08	35.16	30.71	3x17.5		12.76	72.17	6.3	20.04	5	218	



